

2014 Jay Peak Resort Weddings

LODGING OPTIONS & RATES for OFF-SITE EVENTS

We are excited to be hosting you and your guests at Jay Peak!



We take pride in the variety of lodging options to choose from at Jay Peak Resort and are confident that we offer great options for all budgets. Our hotels host over sixteen different room types throughout, with only a portion of them standard hotel rooms with a bed and bath layout. A majority of the accommodations in the hotels are studios with bedding and kitchenettes or suites with separate bedrooms, large living areas and full size kitchens. Outside

of the three hotels you can find an assortment of multi-level cottages, condominiums or apartment style flats.

All wedding guests at Jay Peak all receive a discount on their lodging. To take advantage of these discounts, you are required to book through our reservation desk. Each wedding has a unique double name; the bride's last name is listed first followed by the groom's last name. For example, a wedding between Jane Ellis and Joe Diamond would result in a wedding name of "Ellis Diamond Wedding". By booking under the wedding name you will receive a 15% discount on cottages and condominiums and hotel rooms are available at retail rates, your name will also be listed on the bride and groom's roster helping them communicate easily throughout the weekend.

During the summer months we are rarely at capacity resort-wide, in other words we will always have a bed for everyone. The Hotel Jay and Tram Haus Lodge tend to book most quickly due to their convenient proximities to restaurants, tram, waterpark etc. With this in mind we will set aside a determined amount of hotel rooms for your guests to choose from in each of these hotels. The hold on these rooms will expire 45 days prior although your guests are able to book any open accommodations, weather in the hotels or cottages and condos, and receive the discount up until the day of the event. The hold on the hotel rooms only guarantees that your guests have a variety of room types to choose from in the more popular hotels. Condos and cottages are booked on a first come first serve basis unless other arrangements have been made. Since we have so many of these units it is unlikely they will completely book on any specific date.

The Hotel Jay



THE HOTEL JAY is the resort's main hotel. It offers 176 units consisting of an assortment of Standard King Rooms, Studio Rooms with kitchenettes as well as 1-, 2-, and 3-Bedroom Suites with



mountain, valley or waterpark views. Rooms are located mere steps from the Hotel Jay Conference Center and Vermont's newest (and only) indoor waterpark, The Pump House. Within the hotel there are a range of restaurant options including The Foundry Pub & Grille, Mountain Dick's Pizza, Buddy's Mug Coffee Shop, The Drink Bar, and The Warming Shelter Snack Bar. Guests also have access to the seasonal outside pool facilities, The Family Room, Carved Fitness Center, and Elevation 1851 Family Arcade. All lodging at the Hotel Jay includes Pump House Water Park tickets from day of arrival through day of departure. The Hotel Jay

offers fun for the whole family in a central location.



The Hotel Jay Continued...



Standard King Rooms are Inn style rooms, with a single king bed, TV, coffee maker, wi-fi and full bathroom. Sleeps max of 2.

Studio Rooms have either a queen and a sleeper sofa or two queen beds, a kitchenette including a microwave, mini range, mini fridge and coffee maker, full bathroom, fireplace, TV and wi-fi. Sleeps max of 4.

One Bedroom Suites have a separate bedroom with king bedding, a queen sleeper sofa or Murphy bed in the living room, fireplace, TV, wi-fi, full kitchen and one full bath. Sleeps max of 4.

Two Bedroom Suites have a master bedroom with king bedding and master bath, second bedroom with either bunk beds and twin or single queen bedding, large living area, fireplace, TV, wi-fi, full kitchen, common bathroom. Sleeps max of 6.

Three Bedroom Suites are a two bedroom connected to a King Standard. Sleeps max of 8.



Tram Haus Lodge



The **TRAM HAUS LODGE** is situated alongside the Aerial Tram Base and Ski Lodge a few hundred feet away from the Hotel Jay accessible by the outdoors or through our underground tunnel. The Tram Haus Lodge offers 57 rooms, comprised of Studios, 1-, 2-, and 3- Bedroom suites with both valley and mountain views. There are a number of accessible dining options such as the Aroma Café, Tower Bar and Alice's Table Restaurant in the hotel. It also houses our Taiga Spa and Real Estate

offices. Access to the Hotel Jay pool is included with your room rate.

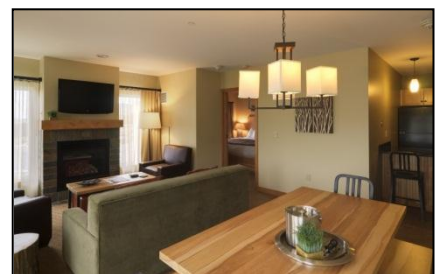
Studio Suites have one queen bed, TV, fireplace, kitchenette including a microwave, mini range, mini fridge and coffee maker, wi-fi, sleeper sofa, and a full bathroom. Sleeps max of 4.

One Bedroom Suites have a separate bedroom with king bedding, a queen sleeper sofa in the living room, fireplace, TV, wi-fi, full kitchen and full bath. Sleeps max of 4.

Two Bedroom Suites have a master bedroom with king bedding and a master bath, second bedroom with queen bedding, large living area, fireplace, TV, wi-fi, full kitchen, common bathroom. Sleeps max of 6.



Located on the fifth floor is our deluxe **Three Bedroom Penthouse Suite** with a master bedroom with king bedding and master bath, two secondary bedrooms with queen bedding, a large central living area, fireplace, TV, wi-fi, full kitchen and second large common bathroom.

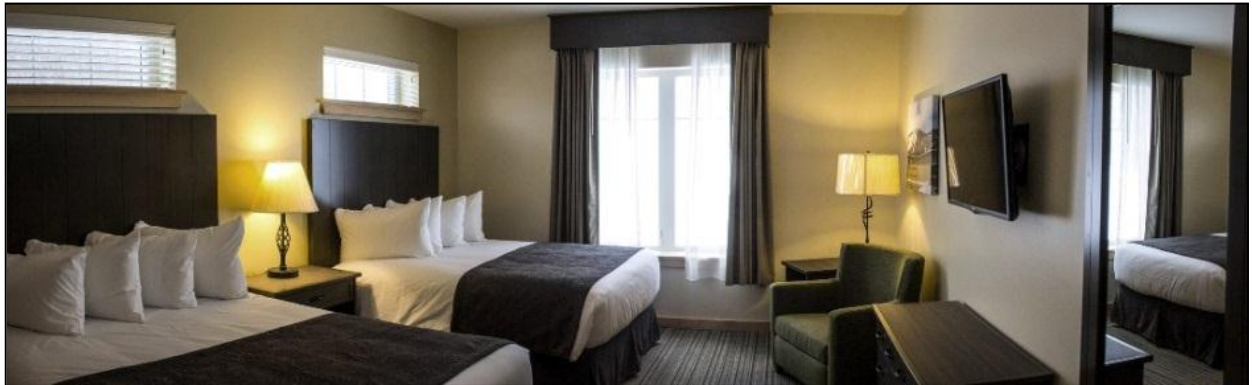


Stateside Hotel



Our brand new **STATESIDE HOTEL** has 85 units providing comfortable sleeping accommodations along with fantastic mountain views at the base of our Stateside ski lifts a short shuttle ride from the Hotel Jay. Howie's Restaurant and the Bullwheel Bar are located on-site along with 2 outdoor hot tubs for guest use.

All **Standard Hotel Rooms** are equipped with either one king bed and a sleeper sofa or two queen beds, master bath, microwave, mini refrigerator and wi-fi. Sleeps max of 2-4.



The Clubhouse Suites

The **CLUBHOUSE SUITES** are located on the 2nd floor in the Clubhouse which is home to the Jay Peak Championship Golf Course, with breathtaking views of the valley ranging east to west. Only three suites are available in this location. The Clubhouse also is home to the The Clubhouse Grille where you can enjoy a delicious meal.



The Orleans One-Bedroom Suite has a private bedroom with king bedding, living area with queen sleeper sofa, TV, wi-fi, full kitchen and master bath. Sleeps max of 5.

The Caledonia One-Bedroom Suite is an ADA compliant room with a separate bedroom with king bedding, living area with queen sleeper sofa overlooking the East view of the course, TV, wi-fi, full kitchen and master bath. Sleeps max of 5.

The Franklin Two-Bedroom Suite has a master bedroom with king bedding, second bedroom with queen bedding, living area with queen sleeper sofa, one common bathroom, TV, wi-fi, full kitchen and balcony overlooking the West view of the course. Sleeps max of 6.



The Golf, Mountain & Timberline Cottages

The **GOLF & MOUNTAIN COTTAGES**

run alongside our Championship Golf Course and our Nordic Trail System, these cottages offer a mix of one and two bedroom duplex, triplex and quad townhome style cottage-like condominiums. These suites are complete with valley and mountain views, brand new comfortable furnishings and décor, flexible bedding options, linens, towels and hand soap. Please bring



your own toiletries and hair dryer and coffee. These units do not provide air conditioning, which does not tend to be a problem with our cool Vermont nights but please take note if this is a requirement for your comfort.

One Bedroom Suites have a king bed in the master bedroom and a queen sleeper sofa in the living room, one bathroom, and full kitchen. Sleeps max of 4.

Two Bedroom Suites have a king bed in the master bedroom and master bath, a queen bed in the second bedroom and a queen sleeper sofa in the living room, fireplace, TV, wi-fi, common bathroom, and full kitchen. Sleeps max of 6.

Our Brand New **TIMBERLINE COTTAGES** offer the same accommodations as the Golf & Mountain Cottages but are located closer to the Stateside Hotel.



Timberline Condominiums



TIMBERLINE CONDOMINIUMS located near the Stateside Hotel offer a mix of one, two and three bedroom townhome style condominiums. All units have comfortable furnishings and décor, multi-floor levels and multiple living areas which make these units perfect for larger groups or multi-family vacationing. These condos are complete with valley and mountain views, brand new comfortable furnishings and décor, flexible bedding options, linens, towels and hand soap are

provided. Please bring your own toiletries, hair dryer and coffee. These units do not provide air conditioning, which does not tend to be a problem with our cool Vermont nights but please take note if this is a requirement for your comfort.

One Bedroom Suites have a king bed in the master bedroom, queen sleeper sofa in the living room, TV, wi-fi, common bathroom and full kitchen. Sleeps max of 4.

Two Bedroom Suites have a king bed in the master bedroom and master bath, queen bedding in the second bedroom, queen sleeper sofa in the living room, TV, wi-fi, common bathroom and full kitchen. Sleeps max of 6.

Three Bedroom Suites have a king bed in the master bedroom and master bath, queen bedding in the second and third bedroom, queen sleeper sofa in the living room, TV, wi-fi, common bathroom and full kitchen. Sleeps max of 8.



Village Condominiums & Townhouses



The **VILLAGE CONDOMINIUMS & TOWNHOUSES** have a variety of options for everyone and are well loved for their close proximity to Hotel Jay and variety of lodging accommodations for larger families and groups. All of these units are privately owned and rented through Jay Peak. Regardless of ownership all units come outfitted with the same standard of quality. Modern kitchens include a range and oven, dish washer, microwave, fridge and coffee maker, dishware, and utensils. Living rooms have gas fireplaces and TVs. Linens and towels are provided. Hard wired high speed internet is offered in all units with the use of an Ethernet cable. The Condo Check in Desk has these cables readily available for a nominal fee of \$5, available when you check-in. You will want to bring your own toiletries, hair dryer and coffee. Air conditioning is provided in specific units. Bedding varies from unit to unit, please inquire about specifics with our reservations desk when booking your lodging.



Summer / Fall Wedding Lodging Rates

- All rates listed are for a one night stay.
- A 15% discount on cottages & condos has been applied to the rates below. All hotel rooms are priced at expected retail rates listed below.
- All rates are subject to a 9% VT State Tax and a \$20/night resort fee.
- Hotel Jay rooms require each guest to have a Pump House Waterpark pass. Passes for the indicated number of adult and youth occupancy has been worked into below rates. This may change with specific occupancy numbers of adults (15+) and children (4-14).
- Discounted golf and waterpark passes can be added onto lodging when booking.
- Early/Late Season begins Sunday May 4th – Wednesday July 1st, 2014
- High Summer/Fall Season begins Thursday July 2nd – Sunday October 13th, 2014

Properties	Room Type	Discounted	Adult	Youth (4-14)
		Early /Late Season Base Rate	Discounted High Season Base Rate	Waterpark Passes Included
Hotel Jay	Standard King Room	\$155.00	\$165.00	2 0
Hotel Jay	Studio	\$189.00	\$213.00	2 0
Hotel Jay	1 Bedroom Suite	\$251.00	\$286.00	2 0
Hotel Jay	2 Bedroom Suite	\$384.00	\$441.00	2 2
Hotel Jay	3 Bedroom Suite	\$563.00	\$634.00	4 2
Tram Haus Lodge	Studio	\$133.00	\$157.00	
Tram Haus Lodge	1 Bedroom Suite - kitchenette	\$165.00	\$200.00	
Tram Haus Lodge	1 Bedroom Suite	\$195.00	\$230.00	
Tram Haus Lodge	2 Bedroom Suite	\$278.00	\$335.00	
Tram Haus Lodge	3 Bedroom Suite	\$401.00	\$472.00	
Stateside Hotel	Standard Hotel Room	\$99.00	\$109.00	
Club House Suites	1 Bedroom Suite	\$157.25	\$195.50	
Club House Suites	2 Bedroom Suite	\$261.80	\$320.45	
Golf and Mountain Cottages	1 Bedroom	\$139.40	\$169.15	
Golf and Mountain Cottages	2 Bedroom	\$200.60	\$240.55	
Timberline Cottages	1 Bedroom	\$139.40	\$169.15	
Timberline Cottages	2 Bedroom	\$200.60	\$240.55	
Timberline Condominiums	1 Bedroom	\$139.40	\$169.15	
Timberline Condominiums	2 Bedroom	\$200.60	\$240.55	
Timberline Condominiums	3 Bedroom	\$260.10	\$317.05	
Village Condominiums	2 Bedroom	\$228.65	\$271.15	
Village Condominiums	3 Bedroom	\$296.65	\$356.15	
Village Condominiums	4 Bedroom	\$364.65	\$432.65	
Village Condominiums	5 Bedroom	\$424.15	\$509.15	



STATESIDE HOTEL & BASE LODGE

MOUNTAIN KIDS ADVENTURE CENTER

JAY PEAK VILLAGE SOUTH ENTRANCE

STATESIDE ENTRANCE

TIMBERLINE COTTAGES & CONDOS

JAY PEAK ROAD

TRANSIDE ENTRANCE

GOLF & MOUNTAIN COTTAGES

THE GRAMMY JAY

QUEEN'S HIGHWAY

SLOPESIDE

TRAM HAUS LODGE

PUMP HOUSE

HOTEL JAY

ICE HAUS

ADMINISTRATION & GROUP SALES

MOUNTAINSIDE

JAY PEAK VILLAGE NORTH ENTRANCE

THE BARN Wedding & Events

GOLF CLUBHOUSE & NORDIC CENTER

CLUBHOUSE SUITES

FAIRWAY

STONEY PATH

QUEEN'S ROAD

SOUTH VILLAGE ROAD

BRIDGE ROAD

NORTH VILLAGE ROAD

SLOPESIDE ROAD

TRAILSIDE

WEST BOWL ROAD

3000

2000

1000

900

800

700

4082-4098

4078-4081

4071-4074

4058-4070

4061-4067

4047-4053

4054-4056

4037-4040

4041-4046

4019-4026

4031-4036

4027-4030

4011-4018

4075-4077

4076-4078

4772-4777

4783-4785

4786-4788

4789-4791

4792-4794

4795-4797

4798-4799

4800

4778-4785

4772-4777

4783-4785

4786-4788

4789-4791

4792-4794

4795-4797

4798-4799

4800

4778-4785

4772-4777

4783-4785

4786-4788

4789-4791

4792-4794

4795-4797

4798-4799

4800

4778-4785

4772-4777

4783-4785

4786-4788

4789-4791

4792-4794

4795-4797

4798-4799

4800

4778-4785

4772-4777

4783-4785

4786-4788

4789-4791

4792-4794

4795-4797

4798-4799

4800

4778-4785

4772-4777

4783-4785

4786-4788

4789-4791

4792-4794

4795-4797

4798-4799

4800

4778-4785

4772-4777

4783-4785

4786-4788

4789-4791

4792-4794

4795-4797

4798-4799

4800

4778-4785

4772-4777

4783-4785

4786-4788

4789-4791

4792-4794

4795-4797

4798-4799

4800

4778-4785

4772-4777

4783-4785

4786-4788

4789-4791

4792-4794

4795-4797

4798-4799

4800

4778-4785

4772-4777

4783-4785

4786-4788

4789-4791

4792-4794

4795-4797

4798-4799

4800

4778-4785

4772-4777

4783-4785

4786-4788

4789-4791

4792-4794

4795-4797

4798-4799

4800

4778-4785

4772-4777

4783-4785

4786-4788

4789-4791

4792-4794

4795-4797

4798-4799

4800

4778-4785

4772-4777

4783-4785

4786-4788

4789-4791

4792-4794

4795-4797

4798-4799

4800

4778-4785

4772-4777

4783-4785

4786-4788

4789-4791

4792-4794

4795-4797

4798-4799

4800

4778-4785

4772-4777

4783-4785

4786-4788

4789-4791

4792-4794

4795-4797

4798-4799

4800

4778-4785

4772-4777

4783-4785

4786-4788

4789-4791

4792-4794

4795-4797

4798-4799

4800

4778-4785

4772-4777

4783-4785

4786-4788

4789-4791

4792-4794

4795-4797

4798-4799

4800

4778-4785

4772-4777

4783-4785

4786-4788

4789-4791

4792-4794

4795-4797

4798-4799

4800

4778-4785

4772-4777

4783-4785

4786-4788

4789-4791

4792-4794

4795-4797

4798-4799

4800

4778-4785

4772-4777

4783-4785

4786-4788

4789-4791

4792-4794

4795-4797

4798-4799

4800

4778-4785

4772-4777

4783-4785

4786-4788

4789-4791

4792-4794

4795-4797

4798-4799

4800

4778-4785

4772-4777

4783-4785

4786-4788

4789-4791

4792-4794

4795-4797

4798-4799

4800

4778-4785

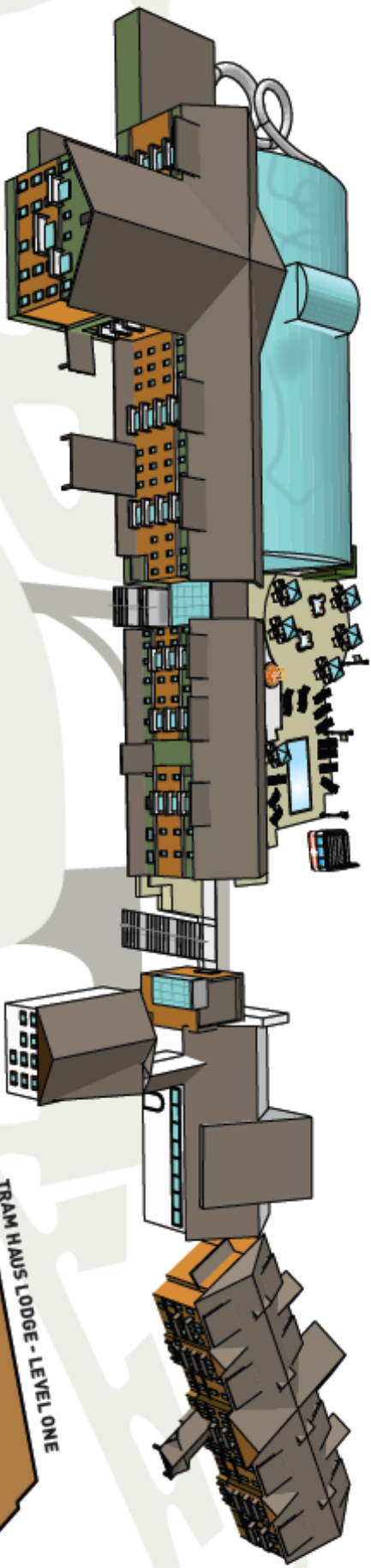
4772-4777

4783-4785

4786-4788

4789-4791

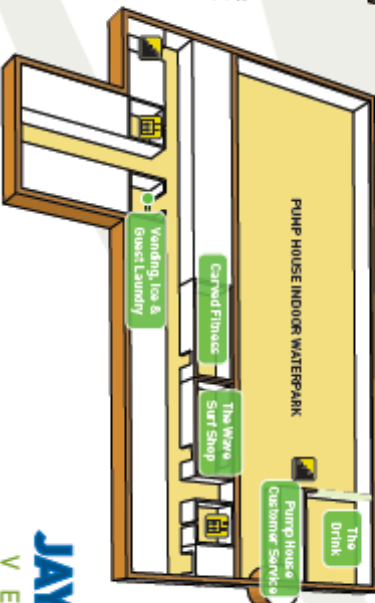
4792-4794



HOTEL JAY - LEVEL ONE



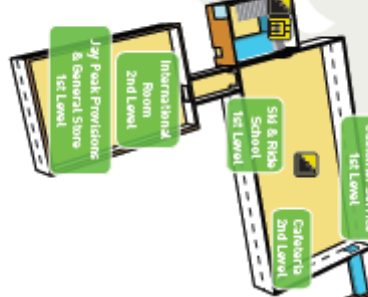
HOTEL JAY - LEVEL TWO



TUNNEL

← TO HOTEL JAY
TO TRAM BASE LODGE & TRAM HAUS LODGE →

TRAM BASE LODGE



TRAM HAUS LODGE - LEVEL ONE



TRAM HAUS LODGE - LEVEL TWO



MAP KEY

- GUEST LOCKERS
- ELEVATORS
- BATHROOMS
- STAIRS

JAY PEAK BASE MAP
VERMONT

Map By: NorthPoleDesign.com

GOLF CLUBHOUSE & CLUBHOUSE GRILLE THIS WAY

